



# TrailerLinc

The smartest way to focus on your trailers

TrailerLinc is a smart system that puts you in control. It tracks the location and utilization of all your trailers in real time, all the time. Whether they're being pulled by your own or a subcontractor's truck, carried by a ferry or train, or left uncoupled. Even rented trailers equipped with TrailerLinc can be monitored and managed.

**TrailerLinc benefits your business in many ways:**

- Cuts down the risk of trailer or cargo theft
- Improves trailer productivity, increases utilization
- Ensures cargoes are heading to the right destination
- Notifies customers of delivery status automatically
- Provides real-time 3PL/4PL (Third/Fourth Party Logistics Provider) cargo visibility



## Where are your trailers right now?

Unless you know where your trailers are and what they're doing all the time, you could be leaving valuable cargo unprotected. Coupled or uncoupled, you need to be aware of their location, which direction they're going, and how fast. Even if they're rented, being pulled by a subcontractor's truck, or on trains or ferries.

### Track your cargo all the time

TrailerLinc solves all these problems by tracking the location and utilization of all your trailers in real time. The system fits in an inconspicuous box underneath the trailer, is robust and reliable, and incorporates smart features previously found only in expensive systems. It records couple and uncouple events, detects trailer thefts, and even subcontractor driving styles to protect delicate and valuable cargo.

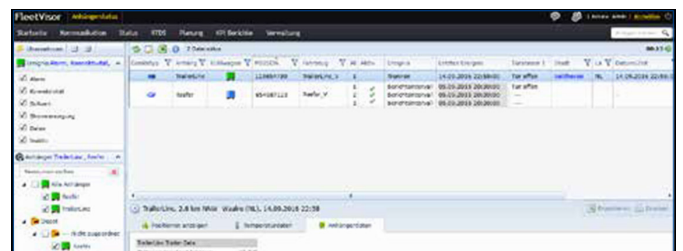
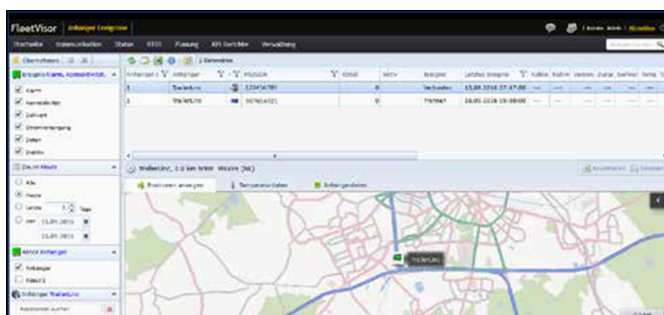
### How it works

TrailerLinc gives your back office real-time positioning on trailers whether parked or in transit, along with speed, direction and other essential details. It does this even if you don't have your own trucks or drivers. An internal battery lets the system work stand alone, using GPS and cellular signals; ensuring total trailer visibility.

TrailerLinc regularly reports the trailer's position to VDO FleetVisor web portal and integrates with existing Transport Management Systems. The system fits well into 3PL and 4PL environments requiring real time cargo visibility. You can also automatically optimize your trailer routes, and at any time go to the map to check. Trucks that already use the TruckLinc Black Box can automatically match trailer to truck; each truck / trailer combination gets a unique identifier.

### Shows trailer location and activity

- A motion sensor signals whenever there is an unexpected event, and reports the trailer speed and location.
- TrailerLinc records how long trailers were connected and disconnected. You can analyze how long your trailer is in transit, parked up somewhere, or standing still at your customer premises or at your own depots.



TrailerLinc tells you exactly where your trailers are and what they're doing.



## Performance features

- Track and Trace when coupled
- Track and trace when uncoupled and moving
- Track and trace when uncoupled and standing still
- Coupled and Uncoupled event
- Battery Level info
- Truck x Trailer Matching
- Over-the-Air Updates

## Details

- 1 minute position
- 1 hour position
- Every 24 hours
- Visible on VDO FleetVisor
- Visible on VDO FleetVisor (Contact us for details)
- Yes (Contact us for details)
- Yes

## Easy to install

TrailerLinc is built into a secure box that can only be opened with a special tool. The ruggedized unit keeps out dust and water, even withstanding high-pressure steam cleaners.

It's easy to install, with no expensive sensors or wired connections between truck and trailer. All it needs is a connection to a power feed to occasionally recharge the battery. A pigtail cable connects the box to the trailer to eliminate the vulnerable connector used by some systems.

If you need to implement additional features like trailer temperature control, access to other trailer data, or EBS functionality, VDO carefully selected integration partners can help.





## Technical Specifications

### Technical features:

GSM  
 Operating System  
 CPU  
 Enclosure and connector  
 Power Input  
 Max. current draw  
 Operating Temp.  
 Temp.  
 Dimensions (cm)  
 Weight  
 GPS  
 Glonass / Galileo Receiver  
 SIM Card Interfaces  
 Accelerometer / Gyroscope  
 Digital Input (DI)  
 CAN Interface  
 Cable Harness  
 Mounting  
 Certifications R&TTE  
 Certification Waste Electrical & Electronic Equipment Directive (WEEE)  
 Certification safety  
 Certification RoHS (lead free)

### Details

2G STD (internal antenna)  
 OS20  
 STM 32-bit 208 MHz ARM946E-S  
 IP 69k, rugged waterproof  
 8 - 36 V  
 0.6 A  
 -30°C bis +75°C Storage  
 -40°C bis +85°C  
 13,6 x 14,7 x 5,7 (LxBxH)  
 800 grams (1.8 lb) including cable  
 GNSS (Internal Antenna)  
 Yes  
 1  
 Yes  
 1, Active High  
 Yes (J1939)  
 Length: 3 m (open ended 6-pin pigtail)  
 4x M8 screws  
 Directive 1999/5/EC  
 2002/96/EC & 2012/19/EU  
 EN 60950  
 2002/95/EC & 2011/65/EU

### Continental Automotive GmbH

Heinrich-Hertz-Str. 45  
 78052 Villingen-Schwenningen | Germany  
 www.fleet.vdo.com | tachograph@vdo.com | VDO - Eine Marke des Continental-Konzerns

